



PAXCHRISTINEWS

Monthly Magazine of Pax Christi Catholic Community in Eden Prairie March 2015

MARCH TOWARD SUMMER

The Faith Formation
team says,
"It's time to think
about summer!"

Page 15

DO YOU HEAR THE CALL?

The Pax Christi Leadership Councils Want YOU! Page 6



PAX CHRISTI

Catholic Community

12100 Pioneer Trail, Eden Prairie, MN 55347-4208
Phone: 952-941-3150 Website: www.paxchristi.com

Office Hours

Monday–Friday 8:00am–4:30pm

Mass Schedule

Weekend Masses

Saturday 5:00pm
Sunday 9:00am, 11:00am, 5:00pm

Nursery available at all weekend Masses.
Interpreter for hearing impaired at 11:00am.

Weekday Masses

Mondays 8:30am
Tuesdays 8:30am with Rosary to follow
Wednesdays 6:00pm
Thursdays 6:45am
Fridays 8:30am

Sacrament of Reconciliation (private)

Saturdays 4:00–4:30pm

The Pax Christi News is printed monthly by the Church of Pax Christi of Eden Prairie. We accept unsolicited manuscripts and photos from parishioners, but reserve the right to edit and publish such material at our discretion. Email submissions, photos, and/or questions to Melissa Nault, Communications Specialist, mnault@paxchristi.com, or 952-405-7221. All contributions become the property of Pax Christi Catholic Community.



04

The Holy Land – Really!
by Fr. Herb Hayek



06

Leadership



08

Leadership Continued



10

Pastoral Care News



16

Recap Stories



17

Readings for the Month of March



12

Justice News



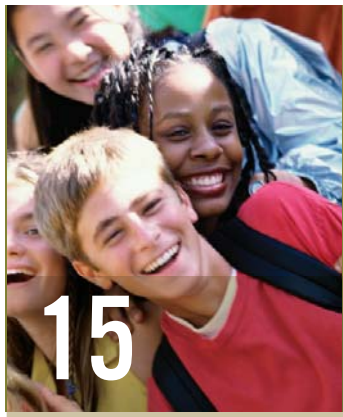
18

What's Going on at Pax Christi



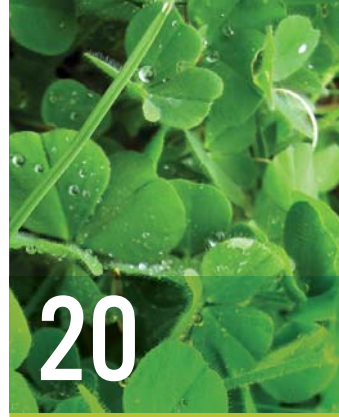
14

Stewardship News



15

Faith Formation News



20

Month at a Glance.... psst, tear this page out!



21

Contact Information

THE HOLY LAND— REALLY!!!



Fr. Herb Hayek
Sr. Associate Pastor



HAVE YOU EVER been to the Holy Land? What is your image of that place? Is it based on something you saw on the travel channel, or public television, or a coffee table book with lots of beautiful photos? I recently returned from a week-long trip there. This was my second time to visit this part of the world. The first time was over two weeks long and included many more of the sites from both the Old and New Testament. This time was quite compressed and focused on just the highlights of Jesus' life. But it reminded me of how complex and complicated this part of the world really is – both religiously and politically. You really cannot separate the two since their history goes back thousands of years, and the problems seem to defy logic, at least to our American minds.

After landing, our small group headed to Bethlehem. We were four priests, one deacon, two Palestinian Catholics, our guide, and the van driver. To get to Bethlehem, you have to drive through Jerusalem. In ancient times, they were only several miles apart. Today, it is continuous city. But to enter Bethlehem, you have to go through the wall. It was constructed by the Israelis during the last ten years. It was supposed to provide security

from "terrorists." Today it seems to be more of a way of shutting people in. It reminded me of the Berlin Wall. It's maybe 15 feet high with barbed wire on top. We had to go through a double checkpoint to enter the city. For tourists, it was easy. It seems that no one wants to endanger the tourist/pilgrim business. But on the Palestinian side, you see a wall covered in graffiti expressing outrage and isolation. It was here that Pope Francis stopped and prayed during his recent visit to the Holy Land. This gesture angered the Israelis since it raised the question about the continued need for this structure. As we came to the Church of the Nativity, I saw a new small mosque across the square from the church. As the Christian/Catholic population shrinks in this city, the Muslim population – or their leaders – seems to be encroaching on our religious sites. But then we don't always help ourselves as Christians. When I was there in 2009 there was a battle between the Greek Orthodox and the Armenians. The church roof was in desperate need of repair, but for any group to do this would give them greater claim to ownership. Even with our small numbers and spaces, there is constant maneuvering to get ahead of others. This time the roof was being repaired, thanks to the United

Nations and Israeli concern not to have the building suffer any more damage. (Don't endanger the pilgrim trade!) To enter the church, you have to bend over and go through a very low door. Tradition says that this is to instill humility and devotion in pilgrims. History tells us that it was to keep out riders on their horses—both crusaders and Saracens. You also soon discover that the main church belongs to the Greek Orthodox and that the Latins (us) have another church that is attached and just around the corner.

We went north to the Sea of Galilee where Capernaum is located. This is where Jesus moved after he left Nazareth (Luke 4). Nearby is the church where tradition tells us that Jesus asked Peter three times: "Do you love me?" (John 21). In that account, Jesus tells the disciples to try throwing their fishing nets to the right side of the boat after having been unsuccessful in their night fishing. The large catch seems miraculous. However, our guide pointed out that a simpler explanation has come to light. Fishermen on the water cannot see fish swimming near the shore. But when you stand on a rocky outcropping near the shore, you can see the fish because of one's perspective and the play of sunlight on the water.



This chapel is located on what is traditionally considered the site of this event. It also reminds us that a different perspective can sometimes help us see more clearly. After this we went to the Mount of the Beatitudes (Matthew 5 & Luke 6). We were able to celebrate Mass with the Archbishop or Patriarch of Jerusalem. Mass the same as here just that it was in Arabic. It was a reminder that the Church is truly Catholic or universal. And Arabic is closer to Aramaic, the language of Jesus.

Back in Jerusalem, you are in the place where the Passion and Resurrection took place. We visited the Upper Room, which is the traditional site of the Last Supper. I realize that we can't always document these places, but they help us put the Scriptures into perspective. However, this room didn't look like early 1st century. Actually, it's a gothic room that was rebuilt by the crusaders. That's a style that did not appear on the scene until over a thousand years after Jesus! And right below this room in the same building is the tomb of King David and his son, King Solomon. How convenient! This I am more

skeptical about. We entered and soon realized that we were the only gentiles there. It was full of Hasidic men, both young and old, dressed in long black coats and large brimmed hats. The level of their praying got louder the longer we were there. We were welcomed by several of them and encouraged to pray at the tomb, which I did. However, I was struck by the obvious contrast to the Upper Room above. Christians are not allowed to have services there. The same doesn't hold true at the tomb. This building is now controlled by the Israeli government. A mystery of faith!!

Our final day found us walking the Via Dolorosa or Way of the Cross. Here we can document many of the actual stations – the Antonium, a fortress which was Pilate's residence when he was in Jerusalem, and certainly the Church of the Holy Sepulcher which also contains Golgotha or Calvary. However, one of the stations is located in the patio of an Islamic school. Only on Good Friday are Christians allowed to enter and pray! Yet even in the Church of the Holy Sepulcher there are divisions. Everyone claims the tomb of Jesus. However,



Greek Orthodox, Armenians, Copts (Egyptian Christians), and the Latins (us) each have their own chapel. Even our oneness in Christ is not always very edifying.

While in Jerusalem, I watched CNN present the memorial for the 70th anniversary of the liberation of Auschwitz, the concentration camp in Poland. It had great meaning for the Israelis and for many others. It made me reflect on how we had come to today's reality. The Romans quashed the Jewish revolt in the year 70 destroying Jerusalem and scattering the Jews throughout the empire. They did not return until the formation of Israel in 1947. But who had lived there for nearly nineteen hundred years before? To salve our collective conscience at having

done so little to assist the Jews before the war, the Allies gave them a new/old homeland. But in so doing, we created a new problem. We displaced the Palestinians who had lived in Palestine (Israel) for centuries. We gave one group a home and forced another into exile. This is the land of Jesus and holy to the people of the Book, Jews, Christians, and Muslims. It seems that everyone is a victim and an oppressor or enemy at the same time. I can only say that I will continue to pray for the people of this land and do what I can to help others understand the complexity of the situation. And hopefully, minds better than mine and hearts that are stronger and more courageous can bring peace one day to this land of the Prince of Peace.

PAX CHRISTI'S LEADERSHIP COUNCILS WANT YOU: DO YOU HEAR THE CALL?

WHO WOULD YOU RECOMMEND TO SHARE TALENTS AS A COUNCIL MEMBER?

People participate in the leadership of Pax Christi for many different reasons. You may hear the call through these or your own personal reason/s:

- A desire to be a disciple of Jesus Christ and a steward of everything God has given you raises awareness of the longing to give of your time and talent to help set a direction for the work of the community.
- Your participation to help the Pax Christi community move forward is important, and you have ideas and contributions that will help the community move to this future.
- You seek a personal opportunity to learn and grow, develop your faith, and strengthen relationships with other members, and identify Council membership as a way to meet these needs.
- You desire engagement on a leadership level with Pax Christi and the personal fulfillment it can bring.



AN INVITATION AND CALL TO SERVANT LEADERSHIP VIA COUNCIL MEMBERSHIP

THIS ARTICLE is a call for *all of us* to realize the 'special grace' that we have received from the Holy Spirit and to consider participation in Pax Christi's Leadership Councils who **SET THE VISION** for the future of Pax Christi, help shape our faith community, and follow a Servant Leadership approach.

As Jesus humbly knelt to wash the feet of His disciples, He was performing an act that Pax Christi would adopt 2000 years later as our guiding example. Jesus lived His life knowing that these people before Him represented a world that He was here to save, yet to serve; to bring the glory of God into their hearts, to instill in them the passion of what would grow into the forgiveness and strength and servitude of the

Christian faith. He declared His example a model for us to follow: "...so that as I have done for you, you should also do." At Pax Christi, our mission, our vision, and our values encompass the idea that we belong here to achieve this holy purpose. Our commitment to this community makes us leaders in faith for service to the world, advocates for the marginalized, and champions for change who welcome everyone seeking a spiritual home, free of judgments. Our cause is to share in this effort; to meet the needs of our Church and our mission.

WE NEED YOU – "DO YOU HEAR THE CALL?"

There are many members of the Pax Christi Catholic Community. And we need all of you. We need your skills, your intellect, and your passion - that feeling inside of you that tells you that you have an important gift to share. We are on a grand mission. We witness this in the small steps we take to improve our lives and in the masterful strides we take to help the poor in spirit, the mournful, the persecuted, the peacemakers, and everyone who seeks justice and purity of heart. Whether you notice

this passion burning in you or you wonder about the special grace given to you from above, we need you. Your passion or your simple wondering will flourish perfectly on one of our leadership councils. Jesus did not wonder if He should wash the feet of His disciples or help the lowly who begged to be a part of His life. He did it. As well should we.

A DIFFERENT APPROACH TO SERVICE AND SHARING OF GIFTS

Since Pax Christi embraces the Servant Leadership model, Council membership/ leadership at Pax Christ is not about one more volunteer commitment, another meeting, or carving out one more piece of your precious time. Instead, council participation is intended to **FILL YOUR SPIRIT**, not drain it, as you use the gifts God has given you in service to this community. Council members embrace and embody the Servant Leadership approach, actively participate in the councils, including regularly attending meetings as well as occasional meetings based on specific committee needs, and participate in the life of the parish. The councils meet throughout the year except in July.

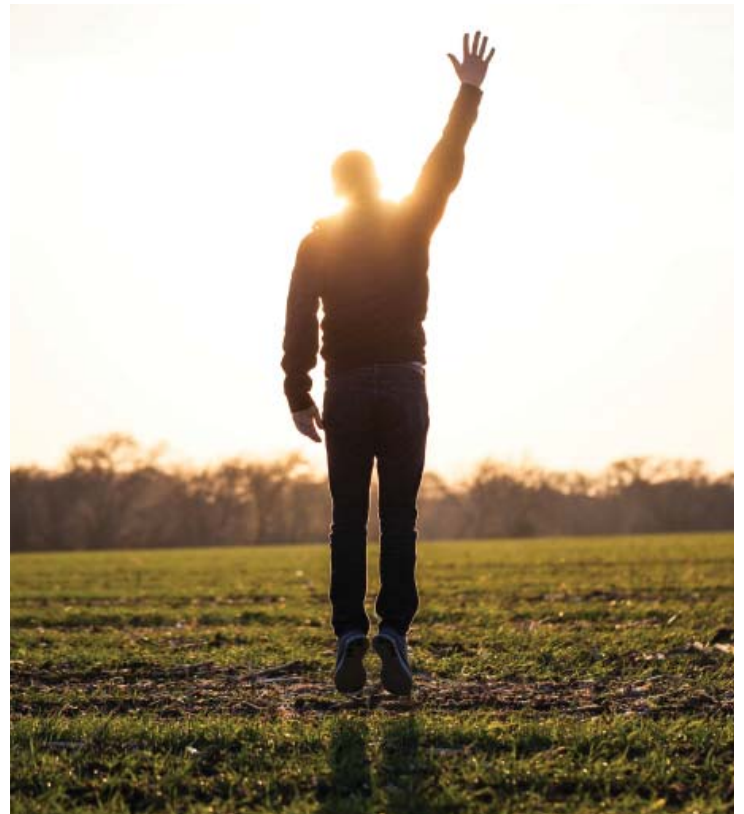
Council members serve three year terms on a rolling basis, so as individuals complete their terms, new members are needed. This year, there are 25 people who will complete their terms in June, so 25 new members are needed for terms that will begin in July, 2015.

DO YOU HEAR THE CALL?

WHAT ARE THE PRACTICAL POINTS TO COUNCIL MEMBERSHIP?

THERE are nine Leadership Councils (Community, Facilities, Faith Formation, Finance, Justice, Lay Leadership, Pastoral Care, Stewardship, and Worship), each with a specific focus on the needs of our parish. These councils set the vision for the future of Pax Christi, help shape our faith community, and follow a Servant Leadership approach. They keep our physical foundations strong – the building and the grounds, as well as the spiritual foundations we strive for as individuals and that which we work together for as a community. Being a member of a council will fill your spirit and help you embrace the mission that drew you to this community. Being a member is rewarding and gives all of us an opportunity to say that we are truly a part of the parish’s grand mission.

Council members serve three year terms, meeting once a month. Each year, at least three new members from each council are needed for a term that starts in July. That is a lot of talent to replace, and yours is the perfect talent to step in and step up. New council members are not voted in. Rather, they move through a discernment process that is meant to welcome each



prospective member and help him/her to prayerfully and carefully consider God’s plan for the gifts God’s given him/her.

Discernment comes from ‘discerne,’ a Latin term meaning “to separate, set apart, divide, distinguish, or sift.” This process welcomes each individual to consider carefully and understand God’s plan for gifts given so generously to each of us.

The discernment process is guided by Pax Christi and allows individuals to prayerfully understand God’s will to determine whether membership on a particular council would be a good fit for them at the current point in time.

AS A STARTING POINT, THOSE INTERESTED IN COUNCIL MEMBERSHIP:

- Understand, accept, and are willing to operate within Pax Christi’s mission and the mission of the ministry area. The mission statement of the community is: Pax Christi Catholic Community, in company with God, and guided by the Spirit of Vatican II, welcomes all as leaders of faith for service to the world.
- Is a registered member of Pax Christi Catholic Community who has received the Sacrament of Confirmation and worships with the parish community on a regular basis.
- Supports the parish through active sharing of time, talent, and treasure.

CONTINUED ON PAGE 8.

RECOMMENDATION FORM

2015 Pax Christi Lay Leadership

Please complete this form and return it in the collection basket at all Masses or to the parish office by March 18, 2015.

NAME OF PERSON I WISH TO RECOMMEND: (you may recommend yourself)

cut here



I WISH TO RECOMMEND THIS PERSON TO SERVE ON THE FOLLOWING COUNCIL:

- Facilities
- Faith Formation
- Finance
- Justice
- Lay Leadership
- Pastoral Care
- Stewardship
- Worship
- Community Council (Member at Large)
- I trust this person to choose a particular council after considering his/her gifts and the needs of the councils.

This person can benefit this council and/or our parish community by offering these gifts and talents:

Additional forms are available in the parish office and at www.paxchristi.com.

The discernment process is not overly time consuming but does provide the opportunity for careful personal consideration for each individual. Those who have moved through the discernment process indicate it can be both enlightening and personally enriching.

We need you. You are a unique talent with a combination of gifts owned solely by you. Continue your journey with us, and feel the exuberance of being a Leadership Council member. Do you hear the call?

WHAT HAPPENS NEXT?

To start the process, please complete a recommendation form. This form identifies your own interest or your recommendation of someone else who can share gifts through participation on one of the Leadership Councils. The Recommendation Form to the left can be cut out and returned to the parish office by March 18, 2015.

TO LEARN MORE:

Information Nights will be held on April 9 and April 14 at 7:00pm in the Hall of Martyrs.

Pax Christi has a website rich with information! On the website at www.paxchristi.com under "Ministries," you will find additional information on the councils as well as the mission and vision of each. If you would like to learn more about the discernment process or about other service opportunities at Pax Christi, please contact any member of the current Lay Leadership Council or Vicki Klima, vklima@paxchristi.com.

Thank you for prayerfully considering this opportunity to share your gifts.

THE LAY LEADERSHIP COUNCIL:

Cheryl Bann, Chair
 Stan Bann
 Maria Bliss
 Mary Beth Buckman
 Kevin Larabee
 Joe Mabee
 Dave Putrich
 Phil Trovato
 Vicki Klima, Staff

IMPORTANT DATES IN THE NEW COUNCIL PROCESS

MARCH 1-18:

Recommendation forms available

MARCH 18:

Recommendations forms due

APRIL 9:

(Thursday) Information Night #1, 7:00pm, Hall of Martyrs

APRIL 14:

(Tuesday) Information Night #2, 7:00pm – repeat of April 9, Hall of Martyrs

APRIL 28:

Optional: Exploring Council Membership, 6:30 – 8:30 PM, Room 212. Additional information provided to assist those in the discernment process

MAY 5:

(Tuesday) Commitment Night, 7:00pm, Hall of Martyrs

GRACING LIFE WHILE SEEKING REFUGE



GOD IS A REFUGE AND
STRENGTH, A VERY PRESENT
HELP IN TIMES OF TROUBLE.

—PSALM 46:1

THE SEASON OF LENT has often been called a 40-day retreat, a time, at least mentally and spiritually, to pause, examine, reflect, and renew ourselves in light of our relationship with God and with others. Journeying along the Lenten path is sometimes arduous, particularly if we anticipate too much of a desired outcome in the passageway of our spiritual life. Lent, at this point in time, may seem quite new to us in the six and one-half week scheme of things, but we probably have “given up” something, or begun a new practice, or become more aware of this sacred time in our Christian tradition. In essence, whatever we choose to do or not do, this awareness becomes a type of refuge for us, a holy place or a sacred

point of meeting, a stepping aside to become more mindful of our relationship with God and God with us.

Julia Cameron, in her book, *Finding Water: The Art of Perseverance*, writes with a picturesque and artistic point of view on perspectives in finding refuge:

The sky this afternoon is “threatening.” By evening, it will deliver on its threat. Rain will come and with it thunder and lightning. Charlotte, a little West Highland terrier, has recently developed a terror of storms. When the thunder starts, so will her shaking. She will shake and quake until the storm has spent itself. There is no consoling her. She knows the storm is bigger than we are and any words

of consolation are just empty murmurings. “We are all right. We are fine,” I can tell her, but she does not trust the fates. I cannot comfort her.

Trusting the fates is learned behavior for most of us. Like Charlotte, we shake in the face of forces greater than ourselves. And yet, as we suffer through storm after storm, it becomes apparent that our fears do nothing to make it better. The gods do not demand our fears as bribes for our survival. Our fears are just needless suffering. We may as well elect to have faith. We may as well choose to be optimists. We can and do survive our storms.

A refuge, for us, can be a place such as a church, our home, or nature. It can be a state of mind, a pondering of peace and solace. Ultimately, our faith tells us that God is our refuge in times of trouble or despair (Psalm 46). What or where did I find refuge this day? How do I cultivate an awareness of the capacity of what I have within me to weather the storms of my life? What brings about my salvation? Perhaps this is what our Lenten pilgrimage is all about, – acknowledging that I have a Refuge, a Stronghold, a Safe Haven of which our faith and hope are connected.
Written by Jane Schmitz, Director of Pastoral Care.

ADVOCATE FOR YOURSELF AND YOUR LOVED ONES

MARCH 8-14, 2015, is Patient Safety Awareness Week. The National Patient Safety Foundation (NPSF) promotes this annual education and public awareness campaign; the focus for 2015 is *better understanding how patients and providers can enhance communication, which can increase engagement*. The NPSF website (www.npsf.org) has an education and resources section with links to health care information for patients and families including Ask Me 3™. Patients are encouraged to ask these questions to better understand and manage their health, medicines, and medical conditions: 1. *What is my main problem?* 2. *What do I need to do?* 3. *Why is it important for me to do this?*

The Joint Commission's sponsored Speak Up™ program helps patients and their advocates become more informed and involved in their health care. Everyone, patient, family, and health care providers, has a role to ensure safe and high quality medical care. A Speak Up™ brochure, *Help Prevent Errors in Your Care* (www.jointcommission.org/assets/1/6/speakup.pdf), supports involvement by detailing the following:

Speak up if you have questions or concerns. *If you still do not understand, ask again. It is your body and you have a right to know.*

Pay attention to the care you get. *Always make sure you are getting the right treatments and medicines by the right health care professionals. Do not assume anything.*

Educate yourself about your illness. *Learn about the medical tests you get and your treatment plan.*

Ask a trusted family member or friend to be your advocate (advisor or supporter).

Know what medicines you take and why you take them. *Medicine errors are the most common health care mistakes.*

Use a hospital, clinic, surgery center, or other type of health care organization that has been carefully checked out. *For example, The Joint Commission visits hospitals to see if they are meeting The Joint Commission's quality standards.*

Participate in all decisions about your treatment. *You are the center of the health care team.*

If you have questions or are interested in additional information or resources, please contact Ann Dunagan, Parish Nurse, 952-405-7200, or adunagan@paxchristi.com.



PARISHIONER NEWS

JANUARY BAPTISMS

Henry Timothy Lund	1/10/2015
Andrew Raymond Bonin	1/18/2015
William Norbert Beckius	1/25/2015
Isabel Paige Stiebner	1/10/2015
Elise Victoria Theisen	1/10/2015
Rossi Mae Grimm	1/31/2015
Parker Wimmer Pauling	1/31/2015

NO JANUARY WEDDINGS

JANUARY FUNERALS

William W. Peterson	1/30/2015
Judy M. Thurk	1/31/2015

JANUARY NEW MEMBERS

Fafa Agbozo and Andrew Yahmoah Meghan Davy
Julie and John Desmond and family Daniel and Marie Kell
Gretchen and Andy Koshire and family Bob and Kathy LaBombard and family Karrie Murnan Ann Newman
Philip and Barbara Palkert David Preiner and Amanda Nierengarten Justin Stodolka Kristina Trapp

SEASONAL CHANGE BUILDS CHANGES FOR JUSTICE

LAST DECEMBER, when the days were the shortest of the year and the season of fall officially gave way to winter, a couple dozen members of Pax Christi stepped out of the holiday season activities and stepped toward doing something about homelessness. Liturgically, too, the seasons were changing from Advent to Christmas and a celebration of the humble expression of great love in Jesus Christ.

One group of parishioners supported a celebration for some families in the southwest metro who moved from homelessness to housing. They were humbled in shelter living and celebrating the great feat of securing housing (not an easy task).

Another group of parishioners got in step with hundreds of others in the annual march and vigil to remember those who died homeless. For the 30th year, people have gathered to march in silence, remember in prayer, and share out of care and grief. Participants were struck by the contrasts, some of them quite extreme; silence of the march/voicelessness of people in need against the backdrop of the hustle of the season, things many of us take for granted but cannot be taken for granted when homeless, and the questions raised about haves and have-nots. A Just-Faith participant and reluctant marcher noted the incredible dignity for the 158 remembered people against the lack of dig-

nity afforded them in life. And there was a feeling of peace.

To a person, march participants found strength and depth in the experience because they joined others from their faith community as they made a change in their usual view. They cared about the issues involved, they just needed the solidarity of others to help them make a change in their practice. If this can happen with a couple dozen members, what impact would there be if 10,000 members decided to make a change and act?

Now, as winter hands off longer days and warmer temps with the arrival of spring this month, and change from Lent to Easter next month, what change is in store for us as people of faith?

In the midst of this season, how are you being called to let God change your heart, and then work to change the obstacles that keep people from full dignity and justice?

God's love makes sure any regrets we may have are short-lived because God is relentless in meeting us where we are and calling us to a renewed and deeper relationship. The constant change of seasons brings new opportunities to share God's love in service of the world around us.

There are MANY opportunities listed at www.paxchristi.com or call the office. *Written by Michael Griffin, Director of Justice and Faith Formation.*



ENVIRONMENTAL CHALLENGE MINISTRY

LAST MONTH a great crowd of nearly 50 people gathered for a special presentation "From St. Francis, to Pope Francis, to You." The contact and the community connection energized participants, and many made commitments to continue to act to care for creation as disciples of Jesus Christ. To learn more about the movement, go to www.catholic-climatecovenant.org. You will find resources to support your journey in faith at home and in the world around you.

The Pax Christi Environmental Challenge Ministry has plans for future events. The group meets the 2nd Tuesday of the month at 7:00pm. New members are always welcome.

MARCH 22, 10:00-11:00AM
Using Native Plants in Your Garden: Minnesota is home to many native plants, both from the forest and the prairie. They can be utilized in today's home garden and yard. These plants not only provide color and

beauty to your yard and garden but are easy to care for once established, can withstand our harsh Minnesota climate, and attract beneficial insects, including pollinators. This session will cover the benefits of using native plants in your yard/garden as well as identify varieties to grow.

WATCH FOR MORE APRIL DETAILS
Birdwatching and Coffee Event along with something special for Arbor Day. More info online.

MATCH YOUR EXPERIENCE TO ANOTHER PERSON'S NEED

SO OFTEN people question whether they have anything to really offer when notices for volunteering appear in parish communications. This distance seems to grow longer if the need is away from Pax Christi. One of the central values of the parish is stewardship. We acknowledge and celebrate that God has given us gifts, and in gratitude we are called to give back to God in service of God's people. Our gifts give us experience, and our experience can certainly make a difference in the lives of others.

Cristo Rey Jesuit High School is a justice grant recipient. As a college prep school, the families of students need to complete the financial aid form (FAFSA). Because most of the Cristo Rey students are the first in their families to attend college, there is not a lot of experience with these forms. A call for volunteers went out, and Pax Christi parishioner Laurie Hanscom joined others for FAFSA night. Her experience in her own family filled a gap and made a big difference in the lives of a college-bound Cristo Rey student.



Pay attention to the many needs of our justice grant recipients and find ways to make a match between your experience and their call for volunteers. Parish justice grants board members are here to help. Contact the parish office for more information or go to www.paxchristi.com.

TWELVE BASKETS MINISTRY: HELPING PAX CHRISTI BE THE HANDS AND FEET OF CHRIST

WHAT would you do if you didn't have a closet full of towels at your disposal when you bathe or wash your hands and face? Thousands of local families and individuals face this difficult situation every day.

To help alleviate this problem for some of those families, the 12 Basket Ministry will be collecting bath towels, hand towels, and wash cloths for Bridging. Bridging tries to provide a towel set for every person they serve. That adds up to 240 sets of towels per week. Help us provide a weeks worth

of towels by purchasing a set or two of towels and donate them to Bridging on February 21-22 and February 28-March 1. There will be marked red bins to receive them by doors 1 and 3. The families will be very thankful to have what we consider a life necessity.

FUTURE 12 BASKETS DRIVES:

EASTER BASKET COLLECTION:
March 21/22 and 28/29

BABY CARE PRODUCTS DRIVE:
Coming in May

BOOK DRIVE: Coming in June



"HOME IS..." PAX CHRISTI AFFORDABLE HOUSING ADVOCATES

WELL OVER 300 members of Pax Christi responded to the card campaign in late January with a word, phrase, or sentence when they considered the declaration, "Home is..." This represents about 10% of the metro-wide goal set by Beacon Interfaith Housing. To make a memorable impression of what "Home is," these 300 responses are being assembled into scrapbook-style messages for elected officials in the effort to secure \$39 million for affordable housing support services.

THIS MONTH BRINGS SEVERAL ADDITIONAL OPPORTUNITIES FOR ADVOCACY:

March 7/8 and 14/15, after all Masses, tables will be staffed by parish advocates inviting parishioners to write letters to elected officials as part of the affordable housing campaign. Multiple modes of communication are a necessary

ingredient for issue advocacy.

March 10, 2015, Pax Christi Affordable Housing Advocates will participate in the annual Joint Religious Legislative Coalition (JRLC) "Day on the Hill." More information and on-line registration may be found at www.jrlc.org.

Easter/Passover Break brings an opportunity to visit with legislators locally. Contact their office to see if they are scheduling any meetings in the district.

After a very successful campaign last year that secured a substantial investment in affordable housing, this is the year to make sure supportive services are properly funded to make programs effective and dignified. Go to www.beaconinterfaith.org or email mgriffin@paxchristi.com.

HOSPITALITY IS NOT ABOUT WHAT YOU DO, IT IS ABOUT WHO YOU ARE BECOMING. YOU CAN PRESS THE LINENS, INVITE THE HOMELESS, AND SERVE THE HAM. AND UNLESS YOU ARE WILLING TO LET PEOPLE INTO YOUR LOCKED-UP SECRET PLACE, YOU WILL REMAIN ALONE AND SO WILL THEY. THIS BECOMING TENDS TO BE SUBTLE RATHER THAN STARTLING. IT STARTS WITH A CHOICE TO BEGIN. THAT IS HOW ALL CHANGE STARTS: YOU DECIDE IT IS TIME TO CHANGE...HOW MUCH DO PEOPLE MATTER? HOW IMPORTANT IS IT TO MAKE ROOM FOR OTHERS?
—FROM *RADICAL HOSPITALITY: BENEDICT'S WAY OF LOVE* BY FR. DANIEL HOMAN AND LONNI COLLINS PRATT



HOSPITALITY, IT'S MUCH MORE THAN DONUTS ON SUNDAY MORNINGS

REMEMBER that first time you walked into Pax Christi? How were you welcomed? What made you decide to come back? How long did you attend before you decided to register as a member? Why have you decided to stay? For each of our members, there are different answers to those questions. And it's very possible that through the years, some of these questions may get very different answers from the same people. Whatever your reasons, hospitality played a role. It's not only our internal responses that impact hospitality; society and culture also play a role in our welcoming experience. The troubles of the Archdiocese and the conflicts and strife we witness here in the United States as well as around the world, impact how we welcome others and how we feel welcomed.

I've mentioned before that it is impossible to live out our

faith in a vacuum; there is no such thing as an individual Christian. Our call as disciples of Jesus Christ is to actively embrace our faith, to see the face of God in all we encounter, and to be the hands and feet of God in our world. Finding room in your life for others is living hospitality.

On Sunday morning after Mass, the tables are filled with members enjoying treats, coffee, and one another. Some may call it Donut Sunday, but in reality, it is much more than that. After sharing our faith at the Eucharistic table, there is a spirit of hospitality in the air that embraces this community of believers. It starts with the nod of a head as you recognize a familiar face, perhaps a hand shake of welcome, and extends itself to learning more about this

other person and finding the common bond. Joining other members of Pax Christi over a cup of coffee is just one example of community building opportunities that exist here. Sunday morning hospitality after Mass can create a ripple effect of allowing members to feel welcome, to learn about others who worship here, to grow in faith. A cup of coffee and a donut can provide the jumping off point of welcome. What's next is up to you. How are you called to tear down the walls of exclusivity? After you finish that cup of coffee, maybe it's time to consider joining in one of our ministries and activities at Pax Christi, adding your talents to the Gift Inventory, or sharing your gifts in the greater community. How will you welcome others to become the person God calls you to be? *Written by Mary Kennedy, Director of Stewardship.*

MARCH TOWARD SUMMER!

MARCH is here but spring is not, so the faith formation team makes the following recommendation: **THINK ABOUT SUMMER!** Exciting opportunities for children and youth are getting ready for eager participants. Make sure Pax Christi is part of your household's summer plans for fun and faith. From pre-school to high school, there's a place at Pax Christi for you. **SAVE THE DATES!** Registration and program details will be available in April (right after Easter). Parent volunteers help make it all happen, and you receive even more than you give!

VACATION

BIBLE CAMP

**JULY 27-31, 9:00AM-NOON
AGE 3-GRADE 6**

There is no better place for children age 3-grade 6 to have fun singing, praying, doing crafts, and playing games with friends old and new in a very supportive, caring environment. The theme this year is "God is our Rock" and will feature great presentations making bible stories come alive to learn and live the message of God's love. Questions? Contact Renee Dignan, 952-405-7212, or rdignan@paxchristi.com.

"SON" AND SERVICE CAMP

**JULY 27-31, 8:45AM-4:30PM
GRADES 6-9**

Middle School Youth will have a blast this week with service in the morning (helping at bible camp and other sites around the metro), lunch, prayer, and reflection time at Noon, and then fun in the afternoon. Invite your friends from other churches to join you. All are welcome! Questions? Contact Cindy Novak, Middle School Formation Minister, 952-405-7214, or cnovak@paxchristi.com.

YOUTH MISSION TRIPS AND MORE

MIDDLE SCHOOL YOUTH CURRENTLY IN GRADES 6-8

Mission/Service Trip
June 29-July 2, 2015
Sioux Falls, South Dakota

Summer Fest
July 20-24, 2015
Menomonie, Wisconsin

"Son" and Service
July 27-31, 2015
(details in left column)

For more information about these middle school youth activities and more please contact Cindy Novak, 952-405-7214, or cnovak@paxchristi.com.

SENIOR HIGH YOUTH CURRENTLY IN GRADES 9-12

Youth in Theology and Ministry
June 14-27, 2015
St. John's University

Young Neighbors in Action
July 11-18, 2015
Washington, DC (currently full)

For more information about these sr. high youth activities and more, please contact Peter Bierer, 952-405-7210, or pbierer@paxchristi.com.



YOUTH IN THEOLOGY AND MINISTRY (YTM)

EVERY SUMMER, teenagers gather among the Minnesota pines and meet on the shores of Lake Sagatagan to experience the deep mysteries of the universe and discover their purpose in life. Intrigued? Youth in Theology and Ministry (YTM) Camp is a two week summer camp for youth interested in exploring the depths of faith, serving people in need, and becoming leaders in the world.

Every year in the last two weeks of June, Catholic teenagers in grades 9-12 attend YTM Camp at St. John's University in Collegeville, MN. During the camp, young people get to take college-level theology classes, participate in service projects, experience a variety of prayer forms and liturgies, and enjoy all that the campus of St. John's has to offer (the beach, canoeing, hiking, gym, and more!).



YTM is a perfect summer camp for any young person who wants to know more about God and God's plan for her/his life. Registration is now open for Summer 2015. If you register through Pax Christi, you receive 50% off of camp registration fees. Visit www.paxchristi.com/eventregistration to sign-up and contact Peter Bierer for more information, pbierer@paxchristi.com, or 952-405-7210.





FIC – SERVING WITH PASSION

I slept and dreamt that life was joy. I awoke and saw that life was service. I acted and behold, service was joy. –Rabindranath Tagore

LAST FALL, a group of senior high students and their catechists spent time together on Sunday evenings learning about their faith through their interest in nature and the outdoors. This Faith Interest Connector (FIC) merged the talent and interest of their adult leaders (Mary Becker and Ann

Morem) with a love of nature that the youth possessed. Mary is a professional florist, and as a service project she instructed the youth on how to make beautiful floral arrangements, which were then given to residents at Castle Ridge, a care facility located in Eden Prairie. The Catholic residents at Castle Ridge are visited and receive communion weekly from another group of caring ministering adults from Pax Christi. This merging of talent and joy, of youth and elder, of giver and receiver celebrates the goodness of what we are called to as followers of Christ.

Pictures from 2014-2015 FIC sessions – www.paxchristi.com/fic



BINGO! YES, WE HAVE A WINNER!

HOW COULD a person not have fun at an event called the Winter Warmer Friday Family Fun Pot Luck Night? The name says it all! What better way to heat up community life than to bring together all ages to join in on a warm and tasty meal of homemade chili and soup. Held on Friday, January 27, this fun evening was hosted by the Welcoming Ministry and Stewardship Council.

From Goat Soup to Minnesota Wild Rice Chili to Red Bean Chili, the assortment was varied and delicious – who knew our community could cook so well! And for those who weren't able to bring a dish to share, the donation of a can of soup was all the entry needed for the evening. With popcorn popping, the gym was soon hopping as people got into the flavor and fun of the evening.

After filling up with chili, it was on to the bingo games. For some, the game of bingo was a new and exciting adventure. Once they got the hang of horizontal, vertical,

four corners, diagonal, and x-out, they were quick to become winners. Bingo caller, Jane Leopold, even had the crowd standing on their feet to play a game or two! The new members who attended got a great chance to learn what fun it is to be a member of Pax Christi. And for the rest, it was enjoyable to just sit around a table, talk with old and new friends, and play a fun game. Whether you won or not, you went home a winner!

A wide assortment of prizes for the winners was donated from community members and local stores. Thank you to: Lions Tap, Dairy Queen, Great Mandarin, O'Ryans Holiday, the Hobbs family and Prairie Lawn and Garden, Toro, and JJ's Wine and Coffee Bar, for their contributions. Your donations added to the enjoyment of the evening.

Look for more great events in the months ahead. And if you'd like to be part of this great ministry, please call Mary Kennedy, 952-405-7220.



PAX CHRISTI'S ART AND ARCHITECTURE

HAVE YOU found yourself walking the halls in Pax Christi, admiring a painting or print on the walls and wondering, "What's the story behind that great artwork?"

Pax Christi has more than one hundred works of art that grace its walls in the worship space, hallways, offices, and classrooms.

If you were to take a tour around the building, you'd find sculptures, paintings, prints, and mixed media works. Most of this artwork has been donated to Pax Christi by generous parishioners over the last 25+ years.

What if you wanted to learn more about the artwork at Pax Christi? Today you have two ways.

Pax Christi Art and Architecture was recently created to help guide parishioners with an "art tour and building history." There are copies of the printed booklet at the main reception desk. Pick up a copy, and take a self-guided tour throughout all the main spaces, and learn some of the details about the great art work you see each week.

This 35-page booklet offers information and photographs about what went into the design and architecture of the "church" when the Pax Christi Catholic Community first formed almost 35 years ago as well as highlighting representative artwork with full color images and detailed descriptions of the artwork's origins.

For example, did you know that the art collection includes more than 40 crosses and crucifixes - with one in almost every room at Pax Christi? Or, that some of the artwork was created and given by Pax Christi members?

The collection represents a wide range of artistic styles and mediums - from paintings and sculptures to metal work and prints - all created with the intention of inviting reflection around what it means to be Pax Christi.

Would you like to learn more? You can download/print your own copy and take the tour anytime - www.paxchristi.com/art.

Go to www.paxchristi.com/art-committee, to learn more about Pax Christi's Art Committee.

READINGS FOR MARCH

READINGS FOR THE WEEK OF MARCH 1, 2015

Sunday: Gn 22:1-2, 9a, 10-13, 15-18/Rom 8:31b-34/Mk 9:2-10
Monday: Dn 9:4b-10/Lk 6:36-38
Tuesday: Is 1:10, 16-20/Mt 23:1-12
Wednesday: Jer 18:18-20/Mt 20:17-28
Thursday: Jer 17:5-10/Lk 16:19-31
Friday: Gn 37:3-4, 12-13a, 17b-28a/Mt 21:33-43, 45-46
Saturday: Mi 7:14-15, 18-20/Lk 15:1-3, 11-32

READINGS FOR THE WEEK OF MARCH 8, 2015

Sunday: Ex 20:1-17 or 20:1-3, 7-8, 12-17/1 Cor 1:22-25/Jn 2:13-25
Monday: 2 Kgs 5:1-15b/Lk 4:24-30
Tuesday: Dn 3:25, 34-43/Mt 18:21-35
Wednesday: Dt 4:1, 5-9/Mt 5:17-19
Thursday: Jer 7:23-28/Lk 11:14-23
Friday: Hos 14:2-10/Mk 12:28-34
Saturday: Hos 6:1-6/Lk 18:9-14

READINGS FOR THE WEEK OF MARCH 15, 2015

Sunday: 2 Chr 36:14-16, 19-23/Eph 2:4-10/Jn 3:14-21
Monday: Is 65:17-21/Jn 4:43-54
Tuesday: Ez 47:1-9, 12/Jn 5:1-16
Wednesday: Is 49:8-15/Jn 5:17-30
Thursday: 2 Sm 7:4-5a, 12-14a, 16/Rom 4:13, 16-18, 22/
Mt 1:16, 18-21, 24a or Lk 2:41-51a
Friday: Wis 2:1a, 12-22/Jn 7:1-2, 10, 25-30
Saturday: Jer 11:18-20/Jn 7:40-53

READINGS FOR THE WEEK OF MARCH 22, 2015

Sunday: Jer 31:31-34/Heb 5:7-9/Jn 12:20-33
Monday: Dn 13:1-9, 15-17, 19-30, 33-62 or 13:41c-62/Jn 8:1-11
Tuesday: Nm 21:4-9/Jn 8:21-30
Wednesday: Is 7:10-14; 8:10/Heb 10:4-10/Lk 1:26-38
Thursday: Gn 17:3-9/Jn 8:51-59
Friday: Jer 20:10-13/Jn 10:31-42
Saturday: Ez 37:21-28/Jn 11:45-56

READINGS FOR THE WEEK OF MARCH 29, 2015

Sunday: Mk 11:1-10 or Jn 12:12-16/Is 50:4-7/Phil 2:6-11/
Mk 14:1-15:47 or 15:1-39
Monday: Is 42:1-7/Jn 12:1-11
Tuesday: Is 49:1-6/Jn 13:21-33, 36-38
Wednesday: Is 50:4-9a/Mt 26:14-25
Thursday: Evening Mass of the Lord's Supper: Ex 12:1-8, 11-14/
1 Cor 11:23-26/Jn 13:1-15
Friday: Is 52:13--53:12/Heb 4:14-16; 5:7-9/Jn 18:1--19:42
Saturday: Vigil: Gn 1:1--2:2 or 1:1, 26-31a/Gn 22:1-18 or 22:1-2, 9a,
10-13, 15-18/Ex 14:15--15:1/Is 54:5-14/Is 55:1-11/
Bar 3:9-15, 32--4:4/Ez 36:16-17a, 18-28/Rom 6:3-11/Mk 16:1-7

LENT/EASTER SCHEDULE

STATIONS OF THE CROSS - FRIDAY EVENINGS

7:00pm February 20, 27, March 6, 13, 20, 27

SACRAMENT OF RECONCILIATION - (PRIVATE)

3:30-4:30pm Saturdays, February 21, 28, March 7, 14, 21, 28

CELEBRATION OF RECONCILIATION SERVICE

Tuesday, March 10, 7:00pm

LENTEN COMMUNITY NIGHT – FISH BAKE

Friday, March 20, Meal begins at 5:30pm

COMMUNITY LENTEN RETREAT DAY

We are the Church: Remaining Dynamic Amidst Chaos

Saturday, March 21, 8:30am-3:30pm

TRIDUUM/EASTER

HOLY THURSDAY, April 2, 7:00pm Mass of the Lord's Supper
Followed by Adoration in chapel through 10:00pm

GOOD FRIDAY, April 3, 3:00pm & 5:00pm Living Stations
7:00pm Celebration of the Lord's Passion

HOLY SATURDAY, April 4, 12:00noon Blessing of Easter Food
8:00pm Easter Vigil Mass FR. MURTAUGH

EASTER SUNDAY, April 5 – The Resurrection of the Lord
7:00am Easter Mass FR. McMICHAEL
9:00am Easter Mass FR. MURTAUGH
9:00am Easter Mass in Nazareth Hall FR. HAYEK
11:00am Easter Mass FR. HAYEK
11:00am Easter Mass in Nazareth Hall FR. MURTAUGH



A NOTE ABOUT EVENTS AT PAX CHRISTI

Due to the large volume of events we offer at Pax Christi, we have to keep our announcements brief. Please visit us online at www.paxchristi.com for additional information and details. If an event indicates RSVP, you may register/signup online at www.paxchrisi.com/event registration. Questions? Contact the parish office, 952-941-3150.

MARCH

BRIDGING TOWEL DRIVE

The Last Weekend: FEBRUARY 28/MARCH 1

Twelve Basket Ministry will be collecting new bath towels, hand towels, and wash cloths for Bridging. Bridging tries to provide a towel set for every person they serve. That adds up to 240 sets of towels per week. Help us provide a week's worth of towels. There will be marked red bins to receive them by doors 1 and 3. The families will be very thankful to have what we consider a life necessity.

LENTEN BOOK DISCUSSION

Pax Christi Lenten Book Discussion of *Why Stay Catholic: Unexpected Answers to a Life-Changing Question* continues through Lent. There are three options for the 5-week discussion groups:

Sundays, THROUGH MARCH 22, 6:30-7:45pm FOLLOWING MEAL
MONDAYS, THROUGH MARCH 23, 9:00-10:15am FOLLOWING MASS
WEDNESDAYS, THROUGH MARCH 25, 6:30-7:35pm FOLLOWING MASS

The table discussion series will be open assignments. Come when you are able, or come to the whole series. You may even change the days when you participate week-to-week. For more information contact the parish office or Michael Griffin, mgriffin@paxchristi.com.

MIDDLE SCHOOL MID-WEEK MINISTRY

Every Faith Formation Wednesday, 6:00-8:00pm, Room 111

Middle-schoolers, do you need a quick re-charge in the middle of the week? Need a little extra hope (and fun) to help you make it to the weekend? Then come to our Middle School Mid-Week Ministry nights! There's always food, faith, fun, and friends present! Here is the upcoming schedule: March 4 - *God is Like a Comedian*, March 11 - *God is Like a Child*, March 18 - *God is Like a Judge*, March 25 - Movie Night!

FINANCIAL SCAMS AND IDENTITY THEFT SEMINAR

THURSDAY, MARCH 5, 11:00am-12:30pm, DOROTHY DAY
\$5 FOR non-members

Boomers and Beyond will be sponsoring an informational session about financial scams and identity theft with a light lunch served following the presentation. Marcy Harris, of the Community Action Partnership of Suburban Hennepin County (CAPSH), will lead the discussion on scams and forms of identity theft that target seniors. Additionally, the presentation will include information on the types of fraud, why seniors are more vulnerable, how to recognize identity theft, and what to do if you've been a victim. This presentation is free to Boomers' members, with a fee of \$5 for non-members to cover the cost of the lunch. Please register online or call the RSVP line at 952-405-7251. All are welcome! **RSVP**

MENTAL HEALTH AND SPIRITUALITY SUPPORT GROUP

**NEXT MEETING THURSDAY, MARCH 5,
3:00–4:30pm, Room 221 - Sojourner Truth**

The Mental Health and Spirituality Group is an opportunity for participants who have mental health concerns to both give and receive support, to make a deeper connection with God and oneself, and to be exposed to tools which might help make one's life more manageable.

FIRST FRIDAY COFFEE AND CONVERSATION

FRIDAY, MARCH 6, BEGINNING WITH MASS AT 8:30am

On the first Friday of each month, join other parishioners for Mass in the chapel, followed by coffee and rolls in the Chief Joseph room. Mass is at 8:30am followed by a social gathering. The event is sponsored by Boomers and Beyond. All are welcome. If you wish, stay for card or board games following the social.

MIDDLE SCHOOL MISSION TRIP INFORMATION MEETING

Sunday, March 8, 3:30pm, Nazareth Hall; Trip June 29-July 2

All current 6th–8th grade youth are encouraged to be a part of our 2015 summer service trip to Sioux Falls, SD. We will be working with many agencies in Sioux Falls that help the homeless, mentally ill, and families of men in prison. You will be the hands and feet of Jesus! Register for the trip with a \$50 deposit (total cost of the trip is \$300; returning youth from last year's trip pay only \$250 if registered by May 1!). Registrations are due by May 1. Adults are also needed to help drive and chaperone (all adults must have completed a background check, driver's check, and Virtus training). **JOIN US FOR THIS INFORMATION MEETING** to learn more details of the trip.

LENTEN CELEBRATION OF RECONCILIATION SERVICE

Tuesday, March 10, 7:00pm

LENTEN CROSS EXHIBIT

**FEBRUARY 18–APRIL 5
Pacem In Terris Gallery, Martin Luther King Jr., Room 247**

This year's Lenten Cross Exhibit will feature crosses from local artist, Rick Brack. All of his crosses are one of a kind and are individually handcrafted from rich colorful natural stone, using granite, onyx, marble, travertine, quartzite, or sandstone

LENTEN COMMUNITY NIGHT: FISH BAKE

FRIDAY, MARCH 20, MEAL BEGINS AT 5:30pm

ALL PARISH LENTEN RETREAT

**We are THE CHURCH: Remaining Dynamic Amidst Chaos
March 21, 8:30am–3:30pm **RSVP****

EASTER BASKET DRIVE SPONSORED BY TWELVE BASKETS

Weekends of March 21/22 and 28/29, Entrances #1 and #3

Twelve Baskets Ministry invites us once again to use our imaginations to create colorful, bountiful Easter Baskets for children in need. Some suggestions: crayons, books for K-6, small games, coloring books, small toys, school supplies, healthy snacks, small amounts of Easter candy, personal care items: toothbrushes, toothpaste, shampoo. If possible, please wrap your Easter Basket in cellophane. Baskets will be delivered to Holy Rosary Parish, south Mpls; Extension Services, north Mpls; Eastside Learning Center, East St. Paul. Note that empty baskets, items to fill them, and gift cards are always welcome. Baskets for boys are especially needed.

MAKE PLANS NOW

SUMMER FESTIVAL SUMMER CAMP

JULY 20-24, U OF W, STROUT, MENOMONIE, WI, Fee of \$385

Youth currently in 6th–8th grade are invited to participate in this amazing week-long summer camp experience. Join hundreds of other youth for messy games, a rockin' band, funny skits, powerful talks, and a chance to have meaningful conversations about God. Plan now to attend, and register online by May 1. A \$50 deposit will hold your spot (the remaining cost of \$335 will be billed). Adults interested in chaperoning are also needed! **RSVP**

THE GREATEST WEEK OF YOUR SUMMER!

Summer Bible Camp Week – July 27–31

Summer Bible Camp week at Pax Christi Catholic Community offers a special world of programs and activities for children ages 3 through youth entering 8th grade.

Each year during one week in July, Pax Christi comes alive with the excitement of Bible Camp engaging children and youth in worship, crafts, music, games, activities, and our drama team's biblical storytelling bringing Bible stories to life! Watch for upcoming registration and volunteer information.

NATIONAL CATHOLIC YOUTH CONFERENCE (NCYC)

November 19–21, 2015, Indianapolis, IN, Fee of \$700 (est.)

Pax Christi's Sr. High Ministry will be joining over 20,000 Catholic teenagers for the National Catholic Youth Conference (NCYC) at the Lucas Oil Stadium in Indianapolis, IN, and we want you to join us! This incredible weekend is filled with stellar music, inspirational speakers, amazing experiences of prayer and worship, and much more! NCYC is an incredible way to see the Catholic faith in a new way, to grow closer to God, make new friends from around the country, and be inspired to live a life of faith! Sign-up today and get ready for the experience of a lifetime! **RSVP**

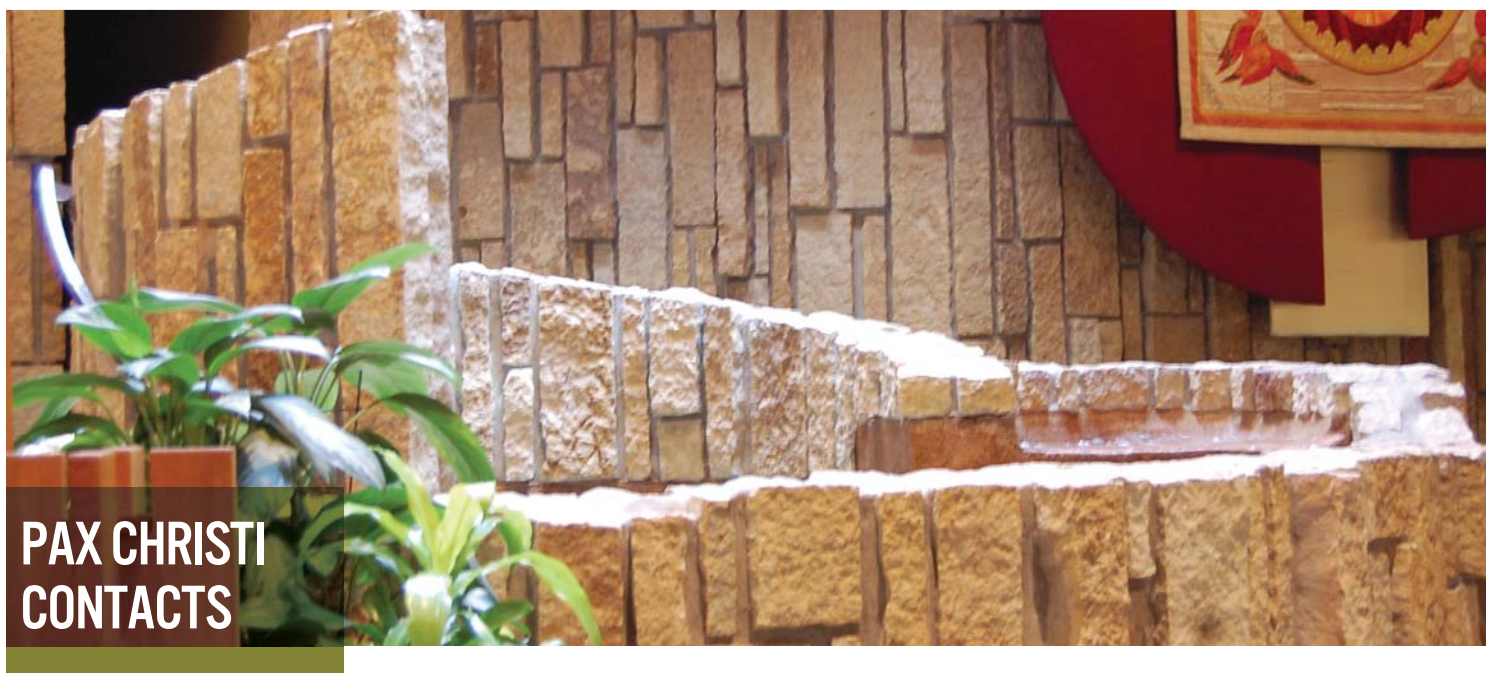
MARCH

at Pax Christi

See pages 18-19 for details.

SUNDAY	MONDAY	TUESDAY	WEDNESDAY	THURSDAY	FRIDAY	SATURDAY
<p>29</p> <p>FAITH FORMATION</p> <p>BRIDGING TOWEL DRIVE</p> <p>BOOK DISCUSSION</p>	<p>30</p> <p>BOOK DISCUSSION</p>	<p>31</p>	<p>1</p> <p>FAITH FORMATION</p> <p>BOOK DISCUSSION</p>	<p>2</p> <p>MENTAL HEALTH/ SPIRITUALITY SUPPORT</p> <p>FINANCIAL SCAMS IDENTITY THEFT SEMINAR</p>	<p>3</p> <p>FIRST FRIDAY COFFEE/SOCIAL</p> <p>STATIONS OF THE CROSS</p>	<p>4</p>
<p>5</p> <p>FAITH FORMATION</p> <p>BOOK DISCUSSION</p> <p>MS MISSION TRIP MTG.</p>	<p>6</p> <p>BOOK DISCUSSION</p>	<p>7</p> <p>CELEBRATION OF RECONCILIATION SERVICE</p>	<p>8</p> <p>FAITH FORMATION</p> <p>BOOK DISCUSSION</p>	<p>9</p>	<p>10</p> <p>STATIONS OF THE CROSS</p>	<p>11</p>
<p>12</p> <p>FAITH FORMATION</p> <p>BOOK DISCUSSION</p>	<p>13</p> <p>BOOK DISCUSSION</p>	<p>14</p> <p>LEADERSHIP MTGS.</p>	<p>15</p> <p>FAITH FORMATION</p> <p>BOOK DISCUSSION</p>	<p>16</p>	<p>17</p> <p>FISH DINNER</p> <p>STATIONS OF THE CROSS</p>	<p>18</p> <p>LENTEN RETREAT DAY</p>
<p>19</p> <p>FAITH FORMATION</p> <p>BOOK DISCUSSION</p>	<p>20</p> <p>BOOK DISCUSSION</p>	<p>21</p>	<p>22</p> <p>FAITH FORMATION</p> <p>BOOK DISCUSSION</p>	<p>23</p>	<p>24</p> <p>STATIONS OF THE CROSS</p>	<p>25</p>
<p>26</p> <p>PALM SUNDAY</p>	<p>27</p>	<p>28</p>	<p>29</p>	<p>30</p> <p>HOLY THURSDAY</p>	<p>MAY 1</p> <p>GOOD FRIDAY</p> <p>LIVING STATIONS</p> <p>LORD'S PASSION</p>	<p>2</p> <p>HOLY SATURDAY</p> <p>BLESS EASTER FOOD</p> <p>EASTER VIGIL</p>
<p>3</p> <p>EASTER</p> <p>EASTER MASSES</p>	<p>4</p> <p>BUILDING CLOSED</p>	<p>5</p>	<p>6</p>	<p>7</p>	<p>8</p>	<p>9</p>





PAX CHRISTI CONTACTS

PASTOR

Fr. Bill Murtaugh 952-405-7245

SR ASSOCIATE PASTOR

Fr. Herb Hayek 952-405-7219

DEACONS

Al Schroeder 952-405-7205
Terry Beer 952-405-7231

PARISH DIRECTOR

Vicki Klima 952-405-7211

ACCOUNTANT

Anne Swenson 952-405-7202

ADMINISTRATIVE SUPPORT

Mike Ferrara 952-405-7207
Maria Miller 952-405-7217

COMMUNICATIONS

Melissa Nault 952-405-7221

Editor

FAITH FORMATION

Director
Senior High
Grades 1-6
Middle School
Pre-School

Michael Griffin 952-405-7230
Peter Bierer 952-405-7210
Reneé Dignan 952-405-7212
Cindy Novak 952-405-7214
Carol Osterhus 952-405-7213

OPERATIONS

Director
Building Services Coord.
Building Services
Building Services

Ken Reineccius 952-405-7250
Al Haider 952-405-7234
Terry Lee 952-405-7233
Todd Nelson 952-405-7233

PASTORAL CARE

Director
Pastoral Care Specialist
Parish Nurse

Jane Schmitz 952-405-7238
Mary Ann Callahan 952-405-7227
Ann Dunagan 952-405-7200

STEWARDSHIP

Director
Nursery Coord.

Mary Kennedy 952-405-7220
Janell McBeain 952-405-7242

WORSHIP AND MUSIC

Director
Weddings/Liturgy
Teen Choir

Donna Kasbohm 952-405-7240
Sally Bergum 952-405-7229
Angie O'Brien 952-405-7243

COMMUNITY COUNCIL

Fr. William Murtaugh
Vicki Klima
Cheryl Bann
Mark Cox
Steve Jacobs
Mike Karas
Jack Kegel
Pat Kelly
Melissa Miller
Mike Schneider
Joe Stich
Mary Testin
Brian Traxler
Phil Trovato, Chair

PARISH TRUSTEES

Shari Steffen
Bruce Koehn

FINANCE COUNCIL

Steve Jacobs, Chair



Church of Pax Christi of Eden Prairie
12100 Pioneer Trail
Eden Prairie, MN 55347-4208

NON-PROFIT ORG.
U.S. POSTAGE
PAID
PERMIT #3844
TWIN CITIES, MN

REMINDERS FOR LENT:

Bring your burgundy bag
of nonperishables to
Mass each week.

Sign-up online to receive
daily lenten reflections.

**PLEASE DELIVER BY
FEBRUARY 28.**

Change Service Requested

Lenten Retreat

We are the Church:
Remaining Dynamic Amidst Chaos

March 21 • 9:00am – 3:30pm
Registration opens at 8:30am • \$15 per person



Led by Brother Jim Zullo, a Christian Brother from Chicago, our parish retreat will help us reflect on how we move forward as a Church despite difficulties within our parish and within the archdiocese. How can we invigorate our faith community? How can we grow as disciples and not use the status quo as our default? The fee is \$15.00. Scholarships are available by contacting the parish office. Register online at www.paxchristi.com/eventregistration.

JAY W. FILLMORE
REMODELING & REPAIR
 Lic # BC-20389035
 Decks • Floors • Kitchens • Baths
 Additions • Siding • Roofing
 No Job Too Small 651-423-3301
 jwfillmore@comcast.net • Cell 651-238-3054

BONNIE BOHN
 Trusted advisor.
 Real estate agent.
Bonnie Bohn.com
 612.382.7880

MARY KAY
Lu Ann Polve
 Independent Beauty Consultant
 6274 Ginger Drive
 Eden Prairie, MN 55346
 Call for a Free Facial or Career Opportunity
 612-803-9233

Free Estimates • References Available • Fully Insured
DENNIS HEIGL PAINTER
DENNIS HEIGL PAINTING, LLC
 Interior: Painting & Staining • Water Damage
 Wallpaper & Texture Removal
 Exterior: Painting & Staining
 DENNIS HEIGL Golden Valley
 (763) 543-0998 Cell (612) 819-2438

The Neighborhood Place
 Jerry's Foods - Eden Prairie
 9555 Andersons Lakes Parkway
 Eden Prairie, Minnesota 55344
JERRY'S
 eat • bowl • play
 Great Breakfast! (Sat. & Sun.)
 tuttlesbowling.com
 107 Shady Oak Rd. • 952-938-4090

Frank Govekar
 General Manager
ABRA
 AUTO BODY & GLASS
 952.937.3488
 60 Lake Drive East, Chanhassen, MN 55317
 Fax: 952.937.5741 • Email: fgovekar@abraauto.com

Benjamin Franklin
If there's any delay, it's you we pay!
 THE PUNCTUAL PLUMBER
 Drain Cleaning, Plumbing, Heating!
 952-931-9676 Lic: PD643703

HELP PROTECT YOUR FAMILY
CALL NOW! 1-888-891-6806
 ADT AUTHORIZED DEALER
 HOME SECURITY TEAM

Tuttle's
 NEW Expanded Game Room
 eat • bowl • play
 Great Breakfast! (Sat. & Sun.)
 tuttlesbowling.com
 107 Shady Oak Rd. • 952-938-4090

Free GREAT GARAGE DOOR CO.
 SAME DAY SERVICE
 NEW DOORS OPENERS
 Estimates (952) 939-9999

HOW'S YOUR BLACKTOP?
PLEHAL BLACKTOPPING
 Driveway & Parking Lots
 Patching Crack Filling & Sealing
 Residential & Commercial
 952-445-7676
 CALL US TODAY FOR A FREE ASSESSMENT

CatholicMatch Minnesota

A-Z RENTAL CENTER
 Eden Prairie
 (952) 944-8040
 www.AtoZrents.com
 Special Events
 (952) 944-6916

Your Ad Here
 SUPPORT OUR PARISH THROUGH LOCAL ADVERTISING
 Contact Bud Bien to place an ad today!
 VBien@4LPi.com or 952-852-4031

MOORE CHIROPRACTIC
 A FAMILY WELLNESS CENTER
 (952) 926-7515
 6600 France Ave. So., #206, Edina
 www.moorechiropractic.org
 drcasey@moorechiropractic.org

CatholicMatch Minnesota
 CatholicMatch.com/MN

find out how far your heart can reach
 Millions of people overseas depend on you. PLEASE HELP.
 1-888-354-0060
 CRS.ORG/cb
OCRS faith. action. results.
 CATHOLIC RELIEF SERVICES

TECHNICRETE®
 IS THE ONLY CONCRETE WITH A LIFETIME, NO-CRACK GUARANTEE.

Clover Cleaners
 Same day Service
 Family owned and operated since 1972
 944-0508
 9342 Ensign Ave. So.
 Bloomington Ferry At Hwy 169
 (near McDonald's)

Phil Cole, Parishioner
 www.lommen.com
 612.339.8131

LOMMEN ABDO LAW FIRM
Phil Cole, Parishioner
 www.lommen.com
 612.339.8131

ALWAYS Kids in the car

HAGE CONCRETE WORKS
 SINCE 1930
 612-861-4243

PROTECTING SENIORS NATIONWIDE
 PUSH TALK 24/7 HELP
 \$19.95*/Mo. + 1 FREE MONTH
 No Long-Term Contracts
 Price Guarantee
 American Made
 TOLL FREE: 1-877-801-7772
 *First Three Months

Huber FUNERAL HOMES
 & Cremation Services
 Excelsior Chapel • 952-474-9595 Mound Chapel • 952-472-1716
 Eden Prairie Chapel • 952-949-4970
 www.huberfunerals.com

ALWAYS Kids in the car

Washburn - McReavy
 Funeral Chapels & Cremation Services

Bremer Bank
 11800 Singletree Lane
 Eden Prairie • 952-944-6262
 1-800-908-BANK • Bremer.com
 Member FDIC

Werness Bros Bloomington Chapel • 952-884-8145
 2300 W Old Shakopee Road

Eden Prairie • 952-975-0400
 2 Blks N. of Hwy 5 on Mitchell Road

Dawn Valley Chapel & Memorial Gardens
 952-941-7686 • 9940 Bush Lake Road

PUDAS LANDSCAPE & Construction
 Landscaping ★ Residential Roofing
 Quality you can trust!
 Call Rich Pudas (952) 201-9006

Washburn - McReavy
 Werness Bros Bloomington Chapel • 952-884-8145
 2300 W Old Shakopee Road
 Edina • 952-920-3996
 West 50th St. & Hwy 100
 www.washburn-mcreavy.com

Huber FUNERAL HOMES
 & Cremation Services
 Excelsior Chapel • 952-474-9595 Mound Chapel • 952-472-1716
 Eden Prairie Chapel • 952-949-4970
 www.huberfunerals.com

ALWAYS Kids in the car

Washburn - McReavy
 Funeral Chapels & Cremation Services
 Werness Bros Bloomington Chapel • 952-884-8145
 2300 W Old Shakopee Road
 Edina • 952-920-3996
 West 50th St. & Hwy 100
 www.washburn-mcreavy.com
 Eden Prairie • 952-975-0400
 2 Blks N. of Hwy 5 on Mitchell Road
 Dawn Valley Chapel & Memorial Gardens
 952-941-7686 • 9940 Bush Lake Road

Bremer Bank
 11800 Singletree Lane
 Eden Prairie • 952-944-6262
 1-800-908-BANK • Bremer.com
 Member FDIC

PUDAS LANDSCAPE & Construction
 Landscaping ★ Residential Roofing
 Quality you can trust!
 Call Rich Pudas (952) 201-9006

SPREAD THE WORD!

YOUR SUPPORT MATTERS!

SPREAD THE WORD!

Notre Dame Academy –
Your regional Catholic school



Call 952.358.3500
or visit nda-mn.org
for more information
or to schedule a tour.



13505 Excelsior Blvd.
Minnetonka MN 55345



Suburban Waste Services
"your hometown garbage hauler"
952-937-8900

MinnCo BUILDERS
ROOFING • SIDING • WINDOWS • GUTTERS
Eden Prairie Company

**Denied? Partial Repair?
Unhappy with your
insurance claim?**

WE CAN HELP!
952-224-0026
www.minncobuilders.com
MinnCo Builders are not public adjusters

Office Furniture Outlet Store!
Open 7 days a week



Desks, chairs, conference
tables and more!

Modern Office
6900 Shady Oak Rd. • Eden Prairie, MN 55344
(952) 941-2837 / Open M-F, 9AM-5PM
www.ModernOfficeFurniture.com



BAYMONT
INN & SUITES
(952) 942.9000

- Centrally located with close access to freeways
- Free Continental Breakfast
- 7740 Flying Cloud Dr. • Eden Prairie

Aging Joyfully
A Residential Elder-care Facility

High quality, personalized care for elders
13050 Pioneer Trail, Eden Prairie, MN 55347
www.agingjoyfully.com 952-941-2510



St. FRANCIS
CHIROPRACTIC
& WELLNESS

Carrie E. Clark, D.C. • Christopher D. Jo, D.C.
David R. Patterson, D.C.
(952) 920-4528 • www.edinachiropractic.com



COTY
CONSTRUCTION
REMODELING

Building Lifelong
Customers Since
1978
952-934-7600
Lic. HBC031519

Roofing • Siding • Windows • Decks
Exterior Remodeling
Roofing • Siding • Decks • Windows
www.cotyconstruction.com

MIDWEST BONDING

JC Christensen, Agent
St. Paul, MN
Toll Free: 866-846-2245

(952) 808-1600
855-375-BAIL



Joe Greco **Bank of America** Home Loans

Senior Mortgage Loan Officer
NMLS ID: 400525
612-590-4784 Cell
joe.greco@bankofamerica.com
mortgage.bankofamerica.com/joegreco



(612) 986-0303
KTeaver@gmail.com
KimTeaver.com
We're ready to help
Call today for a free consultation

Kim Teaver and Company, llc
Your Single Source for Professional Estate
& Moving Sale Services Since 2007

Your Ad Here

SUPPORT OUR PARISH THROUGH LOCAL ADVERTISING
Contact Bud Bien to place an ad today!
VBien@4LPi.com or 952-852-4031

• Sales experience preferred • Full-time
• Competitive benefits program offered
• Overnight travel required

Boyer
Lic #2988

Building Corporation

952-475-2097

- New Homes
- Remodeling
- Kitchens & Baths

Impact
Power to Connect

Customer Communications
Marketing Strategy • Data Analytics
Contact Jan at 612-638-1433

the retreat

Concerned about someone's
alcohol or drug dependency?
We can help.

RECOVERY STARTS HERE
(952) 476-5934
www.theretreat.org

MetroProMedia

Electronic Systems for Home & Business
Entertain • Protect • Control

Frank Wisniewski 612.363.0321
www.metropromedia.com

Marshall's
farm market

Home Grown
Fruits,
Vegetables
& Cut Flowers

952-217-9573
9100 Eden Prairie Rd. • Eden Prairie, MN 55347

EthanRobert
CONSTRUCTION

Baths
Kitchens
Repair
Remodeling

612-987-8666
www.ethanrobert.com Lic# BC630671

Bell Mortgage

Mark Sicora
Senior Mortgage Banker
NMLS # 338048
612.750.5508
marksicora.com

bellbanks.com | A Division of Bell State Bank & Trust

4LPi BECAUSE VIBRANT CHURCHES MATTER

DREAM JOB

- Growing company hiring Ad Sales Executives
- Sales experience preferred • Full-time
- Overnight travel required • Uncapped commissions
- Competitive benefits program

E-mail jobs@4LPi.com for more information

SPREAD THE WORD!
Shop Our Advertisers!

YOUR SUPPORT MATTERS!

BIAGGI'S
RISTORANTE ITALIANO

PRONTO PACK

Biaggi's Pronto Pack is the perfect way to enjoy a great meal at home or on the go! It's perfectly sized to serve 4-5 people and includes the salad and pasta of your choice and our freshly baked bread with Biaggi's Butter for dipping.

\$35.00 (plus tax)

EDEN PRAIRIE CENTER
(952) 942.8555 • www.BIAGGIS.com

St. Therese
SOUTHWEST

Senior Apartments,
Assisted Living,
Memory Care &
Adult Day Program

www.sttheresesouthwest.com
952-236-1783

THE GLENN
by St. Therese Southwest

www.theglennseniorhousing.com
952-232-1606

MAINSTREET
Bar Grill

HOPKINS

Bob & Jan Byer, Parishioners

Open Daily: 11-2 a.m. • Weekend Brunch: 10-2 p.m.
Party Facility available for Private Parties

814 Mainstreet
Hopkins, MN
(952) 938-2400
mainstreetbar.com

Jody J. O'Brien, D.D.S.
Holly McMahon, D.D.S.

952.445.6657
www.obrientalcare.com

O'Brien
DENTAL CARE

www.JeanneMillet.com
Serving SW Buyers/Sellers
Free Downsize Home Consultation
Realtor Since 1996/Parishioner
Bjorklund Realty Inc. 
(952) 944-0025

PARISHESonline
Largest online directory of Catholic Churches

NEVER MISS A BULLETIN!

Sign up to have our weekly parish bulletin emailed to you at www.parishesonline.com

PROVIDENCE ACADEMY



Providence Academy... A school like no other.
New financial aid and grants available.

maid right
LIFE IS SHORT. CLEAN LESS.

www.maidrightminneapolis.com

952-479-0909
Kevin & Sue Johnson

HHW
HULTGREN, HOXIE & WAKI
ORTHODONTICS

Our doctors & team support
all Eden Prairie Community sports & activities
Eden Prairie • Minnetonka • Chaska • Waconia • Mound
hhorthodontics.com 952-937-0111

KNIGHTS OF COLUMBUS
IN SERVICE TO ONE. IN SERVICE TO ALL.

www.kofc.org

HW HOFFMAN WEBER
CONSTRUCTION

Roofing, Siding, Windows, Interiors
(763) 566-2124 | hwconstruction.com

SUMMIT PLACE
A COMMUNITY COMPANY

"The Peak of Senior Living"
Senior Townhomes, Apartments,
Assisted Living and Memory Care
Eden Prairie • 952.995.1000
www.summitplaceseniorcampus.com

Edina Realty

Cristy Willis
(952) 356-7585
cristywillis@edinarealty.com

Mosiah Willis
(612) 708-0871
mosiahwillis@edinarealty.com

- Professional Home Cleaning Service
- Highly Trained Cleaning Teams
- Weekly, Bi-Weekly or Monthly Cleanings
- Exclusive Disinfecting Process
- A Guaranteed Clean Home!

Call For a Free Estimate
Special Offer - mention this ad and get:
\$50 Off
(\$25 off 1st 2 cleans with recurring service)

Lions Tap
"Famous Hamburgers"

Eden Prairie 952-934-5299
Bert & Bonnie Notermann www.lionstap.com